

ON THE LEVEL



TOPICS OF INTEREST

Last year FCFT worked very hard to secure a raise for you. You will see the raise in your November paycheck. FCFT also secured protected planning/meeting time. Some other good news is that it appears that all health care monthly premiums will not rise in January.

FCFT will soon be sending out the annual Member Perspective's Survey. The survey is very important to us since we want all of our members to have a voice and be involved. We think we are very fortunate to have a good superintendent who works with us and listens to our members. Our School Board is also supportive of changes that will benefit our employees.

Did you know that FCFT members can get a \$75 Gift Card for signing up a colleague to join our union? When you have others join, you both benefit! Membership applications can be found at www.fcft.org. Any current member who recruits a first-time member may receive a \$75 gift certificate to a choice of Kohl's, Nordstrom, Amazon, Giant or Costco. FCFT has some guidelines about the gift cards.

- Gift certificates are issued 90 days after the application is received.
- The recruiter's name must be on the membership card at the time the card is received at the FCFT office. We cannot accept a phone-call verification after the fact.
- Gift certificates will be mailed to the recruiter's home address.

Inside this issue:

FCFT works for you!	1
Recruit for FCFT.	1
FCFT Member Perspective's Survey coming soon. Please participate.	1
Keep employment records at home.	1
Look your best while at school.	2
Retirement Planning presented by the School System.	2
FCFT-703-451-6840	2

KEEP GOOD RECORDS!

Be sure to keep accurate employment and licensure records. You need to keep a folder at home with everything that pertains to your employment. Anything left in your classroom may be viewed by administrators and others. Employment records are confidential and should be

maintained safely. If you receive written documents from the School System, keep them at home. Our office has occasionally seen an inaccuracy appear when a member is ready to retire. You never know when an error could affect you adversely.

Reporting an Extended Illness/Injury

Employees must call Liberty Mutual at 1-800-524-0740 to report a work-related or personal extended injury and/or illness* on their fifth consecutive day of absence. Employees must also call Liberty Mutual within a 30 calendar-day period for the same medical condition. If diagnosed with a serious illness or injury that could lead to an extended absence, employees should report to Liberty Mutual ASAP. Doing so will protect the employee's benefit entitlement.

If employees are injured on the job or believe they may have sustained an occupational illness and/or injury, they may be eligible to receive Workers' Compensation benefits. Once an emergency medical service has been called and the employee's supervisor notified, the employee will need to call Liberty Mutual to report the injury/illness.

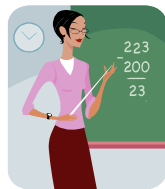
***Please note FCFT does not work on Workers' Compensation cases.**



How Do You Look to Others at School?

Why are we including the attached pictures? It's because of some calls from teachers who have received letters of reprimand in their school files for unprofessional dress.

Be certain that you are familiar with your own worksite's dress-requirements and adhere to them. (When in doubt, check it out!) Remember that you are the face of FCPS. If you dress professionally, you will reflect well upon yourself and your profession.



Pre-Retirement Workshops This Fall

The Educational Employees' Supplementary Retirement System of Fairfax County (ERFC) hosts pre-retirement workshops during the school year for members who are within one to five years of retirement eligibility. Retirement Readiness workshops are for members who are within five years of retirement.

Registration for all workshops is through **MyPLT** under **RET**.

The ERFC office has posted three dates for workshops in November and December for those interested.

For more information, contact the retirement office at 703-426-3900 or erfcoffice@fcps.edu.